

## Culture kit for alpha DC

Blood 12 ml



From collection  
1 week

Lymphocyte  
isolation



$\alpha$ -GalCer added

**Forte**

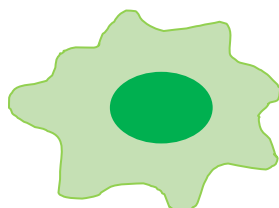


$\alpha$ -GalCer pulsed DC

The alpha DC Culture Kit differentiates and induces mononuclear cells isolated from blood into dendritic cells, which are then stimulated by alpha-GalCer, an immunostimulant, to culture them into alpha-GalCer-pulsed dendritic cells that kill cancer cells in a short time.

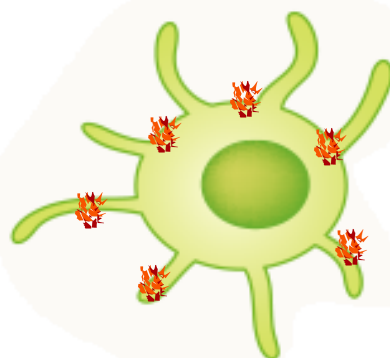


Mononuclear  
cell



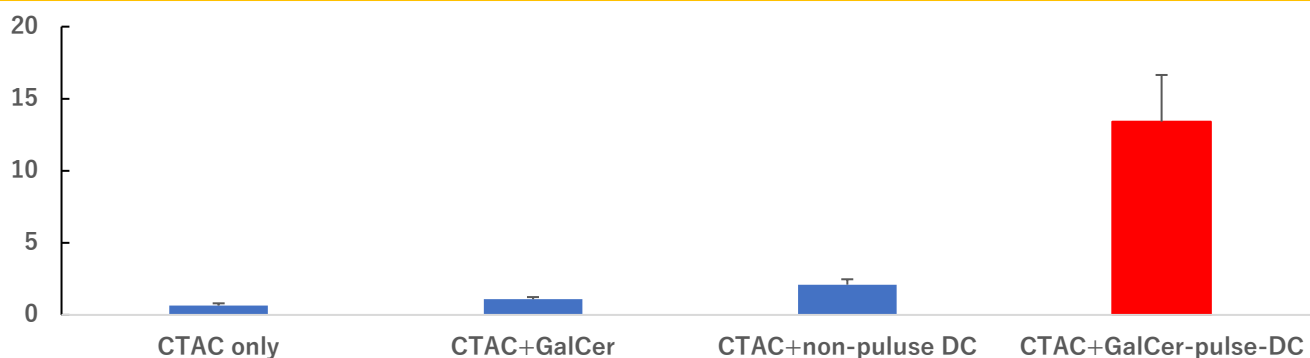
DC

$\alpha$ -GalCer



$\alpha$ -GalCer pulsed DC

Apoptosis induction ability (%) to cancer cells (CTAC) by  $\alpha$ -GalCer pulsed DC



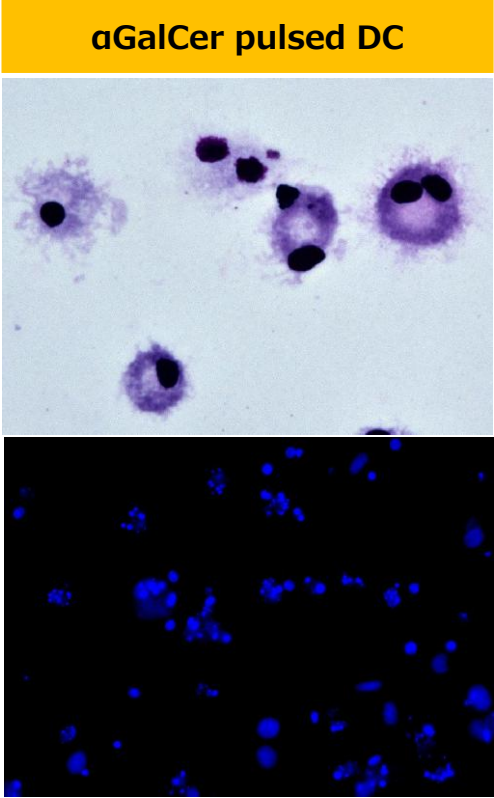
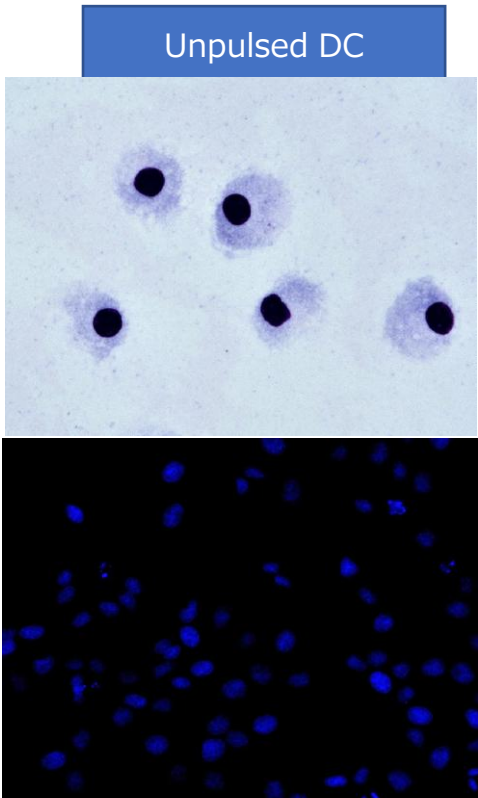
## Composition

This all-in-one culture kit includes everything necessary for a single treatment from culture to administration, including culture bag, culture medium, and pipettes.



## Application Examples

Using a canine alphaDC culture kit, mononuclear cells were isolated from canine peripheral blood and cultured for 1 week to collect dendritic cells. Cell morphology was observed and their ability to induce apoptosis in cancer cells was examined.



Mature dendritic cells with dendrites and two nuclei are identified.

Confirmation of apoptosis of cancer cells

## Comparison of 3 recommended DC kits

	DC Culture Kit	DC10 Culture Kit	Canine alpha DC Culture Kit
Adaptation	Dot, Cat	Dog	Dog
Blood volume and culture requirements	Blood 18ml 2 weeks culture Need to change medium	Blood 6ml 1 week culture No need to change medium	Blood 12ml 1 week culture No need to change medium
cancer sensitization	Required (1 week additional culture)	Required (1 week additional culture)	Not required

## Presentation

Ito Y (J-ARM Inc), On Cell Culture (Culture Techniques for Activated Lymphocytes and Dendritic Cells), The 160th Annual Meeting of the Japanese Veterinary Medical Association 2017.