

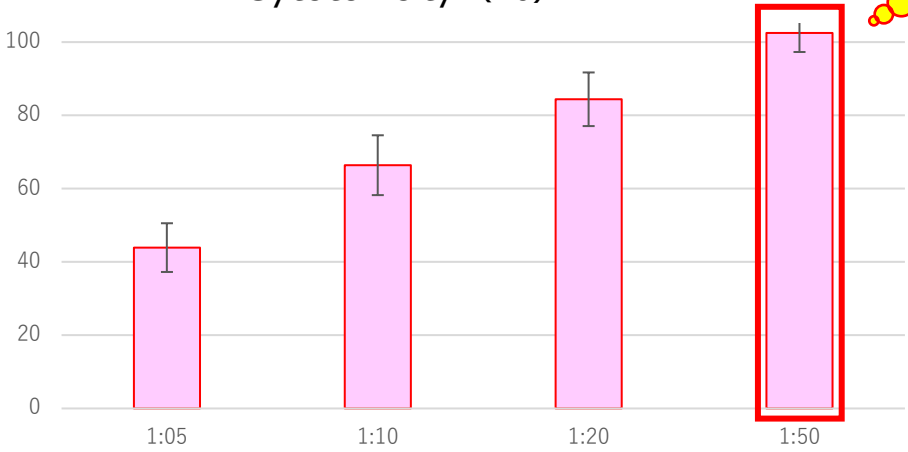
# Culture kit for killer cells

**Forte**

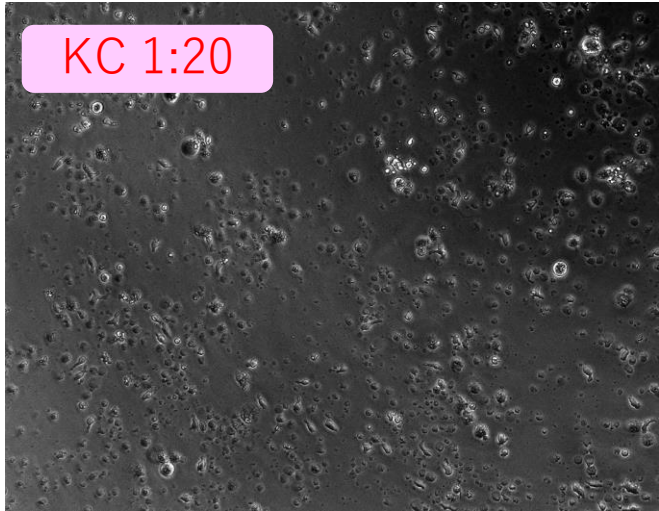
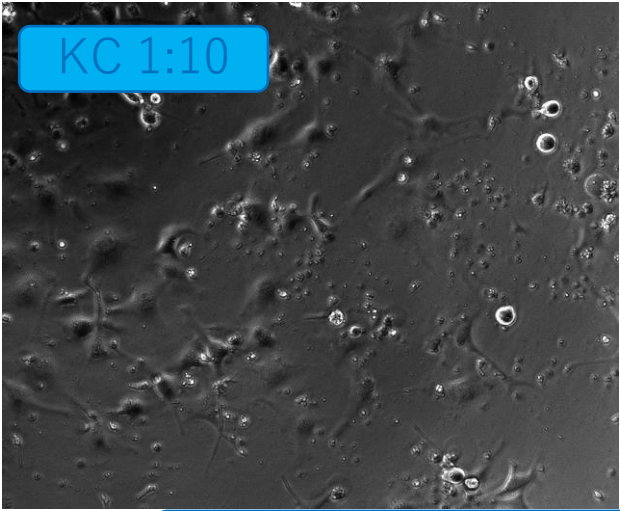
- A kit for convenient and rich culture of canine Killer cells (NK cells) from peripheral mononuclear cells isolated from 10-12 ml of blood.
- Strong cytotoxicity is expected!

**Kills cancer cells !**

Cytotoxicity (%)



CTACs (canine thyroid carcinoma-derived epithelial cells) and KCs were co-cultured at 1:5, 1:20, and 1:50 ratios under 37°C 5% CO<sub>2</sub> conditions.



**CTAC in place**

**Dead CTAC**

**Composition**



	CAT kit	KC kit
①Target	Dog, Cat	Only Dog
②Kit	The culture bag is pre-filled with 250 ml of medium.	<b>The culture bags are not filled with medium.</b> The culture medium is filled in 50 ml centrifuge tubes (1 x 20 ml for seeding and 4 x 50 ml of additional medium).
③ Passive culture	Remove the stopper when the color of the medium changes from red to orange.	<b>There is almost no change in the color of the medium,</b> and cell proliferation is visually observed and <b>passaged by observing the backs in the light.</b>